

Maladies infectieuses et agents pathogènes à déclaration obligatoire

Vue synoptique 2023

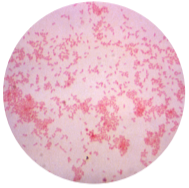
Botulisme

Clostridium botulinum



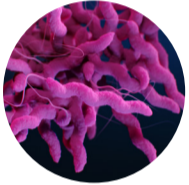
Brucellose

Brucella spp.



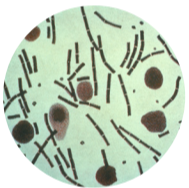
Campylobactériose

Campylobacter spp.



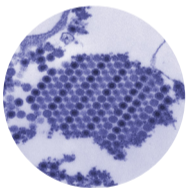
Charbon

Bacillus anthracis



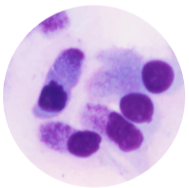
Chikungunya

Virus Chikungunya



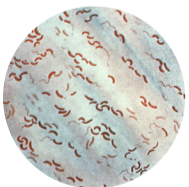
Chlamydie

Chlamydia trachomatis



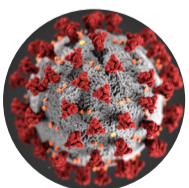
Choléra

Vibrio cholerae



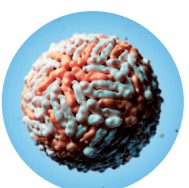
COVID-19

SARS-CoV-2



Dengue

Virus de la dengue

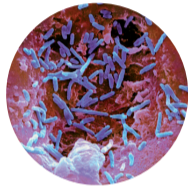


Diphthérie

Corynebacterium diphtheriae
et autres corynébactéries
produisant la toxine

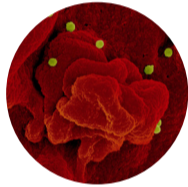


Entérobactéries productrices de carbapénèmases (EPC)



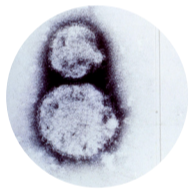
Fièvre de Crimée-Congo

Virus de Crimée-Congo



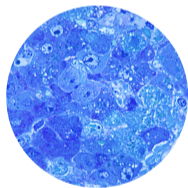
Fièvre de Hantaan

Hantavirus



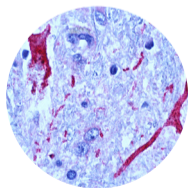
Fièvre de Lassa

Virus de Lassa



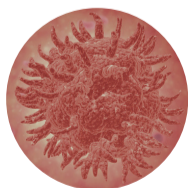
Fièvre du Nil occidental

Virus du Nil occidental



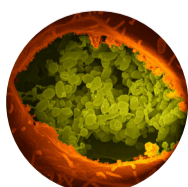
Fièvre jaune

Virus de la fièvre jaune



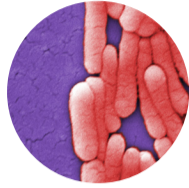
Fièvre Q

Coxiella burnetii



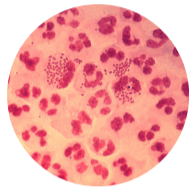
Fièvre typhoïde / paratyphoïde

Salmonella Typhi / Paratyphi



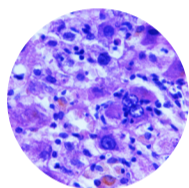
Gonorrhée

Neisseria gonorrhoeae



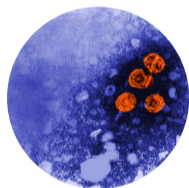
Hépatite A

Virus de l'hépatite A



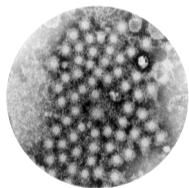
Hépatite B

Virus de l'hépatite B



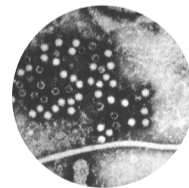
Hépatite C

Virus de l'hépatite C



Hépatite E

Virus de l'hépatite E



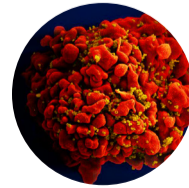
Infection à EHEC

EHEC, STEC, VTEC



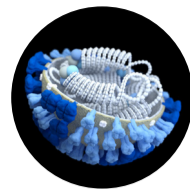
Infection à VIH/ Sida

Virus de l'immunodéficience humaine



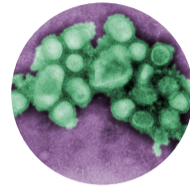
Influenza, grippe saisonnière

Virus Influenza



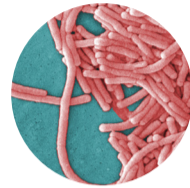
Influenza, nouveau sous-type

Virus Influenza A HxNy
(potentiel pandémique)



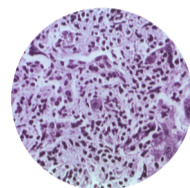
Légionellose

Legionella spp.



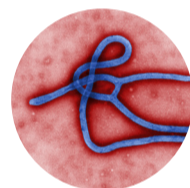
Listériose

Listeria monocytogenes



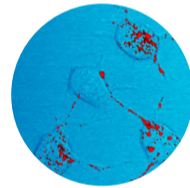
Maladie à virus Ebola

Virus d'Ebola



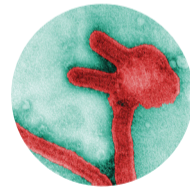
Maladie de Creutzfeldt-Jakob

Prions

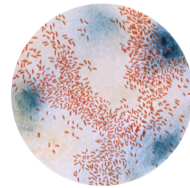


Maladie de Marburg

Virus de Marburg

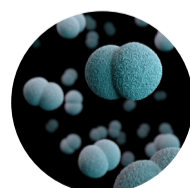


Maladies invasives à Haemophilus influenzae



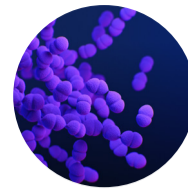
Maladies invasives à méningocoques

Neisseria meningitidis



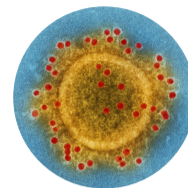
Maladies invasives à pneumocoques

Streptococcus pneumoniae



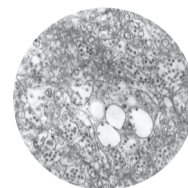
MERS

MERS-CoV



MEVE

Virus de l'encéphalite à tiques



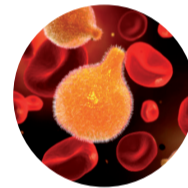
Mpox

Mpox-Virus



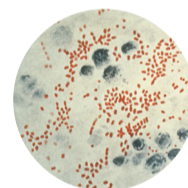
Paludisme

Plasmodium spp.



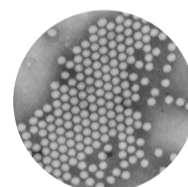
Peste

Yersinia pestis



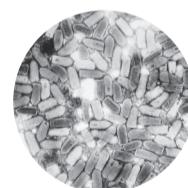
Poliomyélite

Virus de la poliomyélite



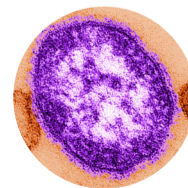
Rage

Virus de la rage



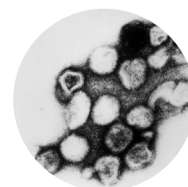
Rougeole

Virus de la rougeole



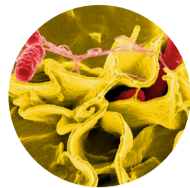
Rubéole

Virus de la rubéole



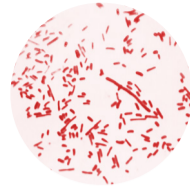
Salmonellose

Salmonella spp.



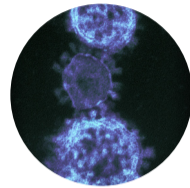
Shigellose

Shigella spp.



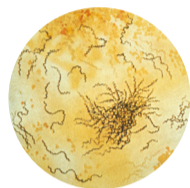
SARS

SARS-CoV



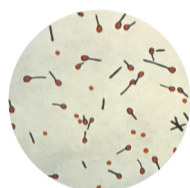
Syphilis

Treponema pallidum



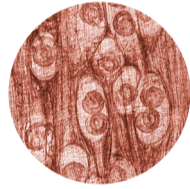
Tétanos

Clostridium tetani



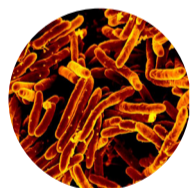
Trichinellose

Trichinella spiralis



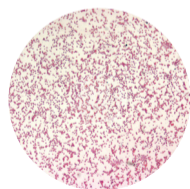
Tuberculose

Complexe *Mycobacterium tuberculosis*



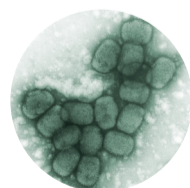
Tularémie

Francisella tularensis



Variole

Virus de la variole



Zika

Virus du Zika

